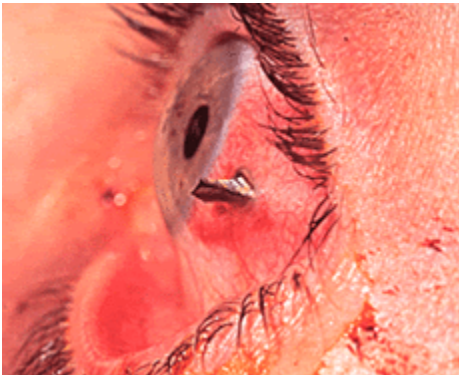


SCOV Woodshop Safety

www.scovwoodworkingclub.com/safety.html



We don't want this to happen to you.
Wearing eye protection* is mandatory
in the SCOV Woodshop!

*Safety glasses with side shields, goggles or face shield.

Safety/Operator/Owner's Manuals

Every member working in the shop is responsible for their own safety. That responsibility includes using common sense and having adequate knowledge of the equipment to operate it safely and effectively and having knowledge of and following the club's safety rules and procedures. In a shared shop like our woodshop, everyone in the shop must be conscious of the fact that any unsafe or improper act on their part can also jeopardize the safety and well-being of others in the shop.

The primary source of information about operating equipment safely and effectively is the equipment's operating/safety/owner's manual. The part of these manuals that address safety and proper operating procedures should be read prior to operating the equipment and should be covered as part of the initial check-out when joining the club. Equipment manuals are available for download via our website's [Equipment Page](#). (www.scovwoodworkingclub.com/equipment.html) Paper copies are also available in the shop. Ask a monitor to locate them for you. Also, all who are in the shop are expected to comply with the following:

- The signs posted on or near some machines.
- The safety rules and operating procedures published in the individual equipment pages in the website.
- Placards attached to a machine by the manufacturer.

Eye Protection

The wearing of eye protection (safety glasses with side shields, goggles or face shield) in the shop is mandatory. This applies to everyone in the shop whether they are operating a machine or not.

A face shield must be worn while operating a lathe.

Respiratory Protection

Members are encouraged to consider using respirators in the shop while using finishes and solvents having toxic fumes. Use the spray booth whenever possible. Also, some woods are toxic, and consideration should be given to using respirators, dust masks and other protective equipment as appropriate. When using a hand sander, be considerate of others in the shop and connect the sander to a shop vac whenever possible.

Monitors

A Monitor must be present in the shop during operating hours. (9:00 AM to 4:00 PM Mon. - Fri.) If no Monitor is available, the shop will be closed.

At least two people must be present in the shop when woodworking machines are operated. At least one of those people must know how to summon aid if required.

Monitors are given the responsibility of supervising the woodshop and the use of equipment within. The lead monitor ensures that monitors are qualified in the use of equipment and trained in related safety awareness measures. Monitors have the authority to deny the use of equipment to any individual who is either unable or unwilling to abide by stated safety rules. (SCOV Revised Club Rules, Regulations & Procedures December 14, 2017)

Club members who are not physically able to properly use specialized equipment and/or facilities must be asked not to use such equipment and/or facilities. (SCOV Revised Club Rules, Regulations & Procedures December 14, 2017)

Safety Training

Persons desiring to work in the shop and use the equipment must:

- Be a SCOV homeowner or renter presenting a SCOVCA Facilities Access Card.
- Receive ten hours of safety and equipment operation training and be approved to operate the equipment. Monitors and club officers can provide information on how to obtain the training and approval.